

Switch Programmer User Guide

Please keep carefully for future use

SUCO Programming Device PPD05 for Performance Series



SUCO Robert Scheuffele GmbH & Co. KG
 Keplerstraße 12-14
 74321 Bietigheim-Bissingen, Germany
 Telefon: +49 (0) 07142 / 597-0
 Telefax: +49 (0) 07142 / 980 151
 E-Mail: info@suco.de
 Web: www.suco.de

Prerequisites:

- A PC with operating system Microsoft® Windows® Vista or higher version.
- A thorough understanding of the specification of electronic pressure switches of the „Performance series“ is mandatory as the application software interface has one to one correspondence to the switch settings.
- Installation and commissioning must be carried out in accordance with these operating Instructions and by authorized, qualified personnel only.

Conditions governing the use of the product

The following general instructions are to be observed at all times to ensure the correct, safe use of the Programming Device (PPD05) and Electronic Pressure Switch (EPS):

- Observe without fail the warning notices and other instructions laid down in the operating instructions.
- Observe the applicable safety regulations laid down by the regulatory bodies in the country of use.
- Give due consideration to the prevailing ambient conditions (temperatures, atmospheric humidity, atmospheric pressure, etc.).
- Never subject PPD05 and / or EPS to intense shock and vibrations.
- Use the product only in its original condition. Do not carry out any unauthorized modifications.
- Remove all items providing protection in transit such as foils, caps or cartons.
- Disposal of the above-named materials in recycling containers is permitted.

Operating conditions

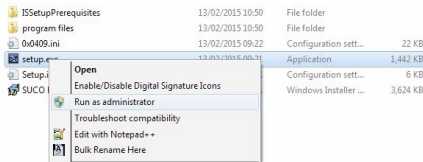
Type of protection IP30:

Type testing does not apply to all ambient conditions without limitations. The user is responsible for verifying that the plug- and socket connection complies with the specified rules and regulations or whether it may be used for specialized purposes other than those intended by us.

Installation

SUCO Switch Programmer is comprised of two parts: an Electronic Pressure Switch (EPS) and Programming Device (PPD05) that connects to a PC with Microsoft® Windows® operating system and the Application Software. Application software must be installed prior to the connection of PPD05 to the PC for correct USB driver installation procedure.

Application software must be installed with administrator privileges. (Right click on the 'setup.exe' and select 'Run as administrator').

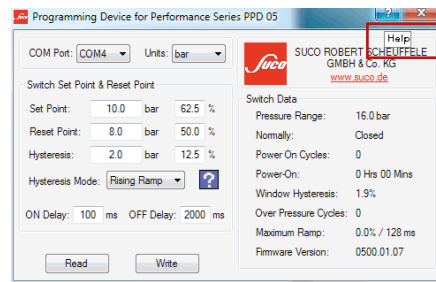


- Accept the license agreement for FTDI driver when prompted during the setup process to complete the driver installation.
- Connect the PPD05 to an available USB port on the PC with the supplied USB cable and wait for the hardware detection process and driver installation of the operating system:



- Take note of the USB Serial Port number (in the above example port number is COM4).
- Make sure the green LED on the PPD05 is lit.
- A 'SUCO Programmer'-icon appears on the desktop, the program will be installed in the Windows® main menu in its own folder.

- Launch the application software by double clicking the 'SUCO Programmer'-icon or select the entry of the Windows® main menu.



- Select the correct COM port number noted beforehand, in the COM Port list box (in our example COM4) upper left.

COM Port: COM4

- Click the help button and verify PPD05 installation has been completed successfully. Hardware and Software version number is visible in the help window.

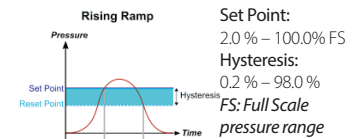
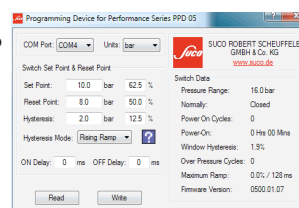


Application software interface

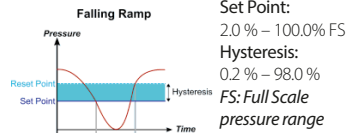
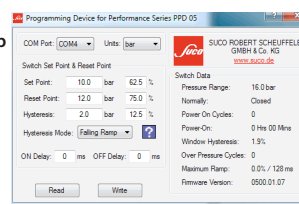
Connect the EPS and press the button "Read". The PPD05 will show the settings of the connected EPS. Now you can change the settings as described below.

Possible settings:

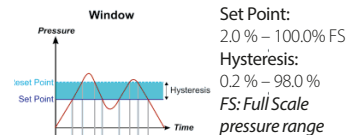
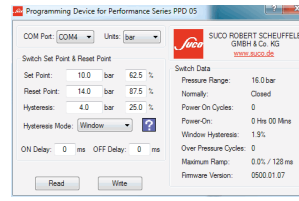
Set Point / rising ramp



Set Point / falling ramp



Set Point / Window



ON / OFF Delay



ON Delay: 0 – 2064 ms
 OFF Delay: 0 – 2064 ms

Press the question mark button for help on settings and function.

Programming the Electronic pressure switch (EPS)

- Select the desired units
- Select the desired hysteresis mode.
- Fill in the desired set points. You can use the value or the percent value. Recalculation will be done automatically when pressing Return-button. Please note, that the percent value is updated with respect to the Full Scale value.
- After selection press the button "Write" to finish it.

Explanation of the Switch Data of the EPS

Switch Data	
Pressure Range: 16.0 bar	Nominal pressure range of EPS
Normally: Closed	Output function
Power On Cycles: 0	Amount of power on cycles since installation
Power-On: 0 Hrs 00 Mins	Power on time since installation
Window Hysteresis: 1.9%	Hysteresis value only for Window Mode (1.6 % ... 2.5 % of FS)
Over Pressure Cycles: 0	Number of cycles which exceeds the nominal pressure range
Maximum Ramp: 0.0% / 128 ms	Maximum pressure change between two pressure cycles
Firmware Version: 0500.01.07	Firmware version of the EPS.



Subject to technical changes without notice.